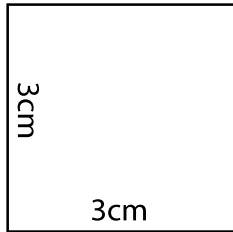


Bonnet chimiothérapie à foulard amovible



Carré test

Valeurs de couture comprises

Valeurs de couture = 1cm

Cran de montage: 

Droit fil: 

Bonnet chimiothérapie
PIECE 1/4
- DESSUS DE TETE -
x2 tissus

 Cran

 Sens pli

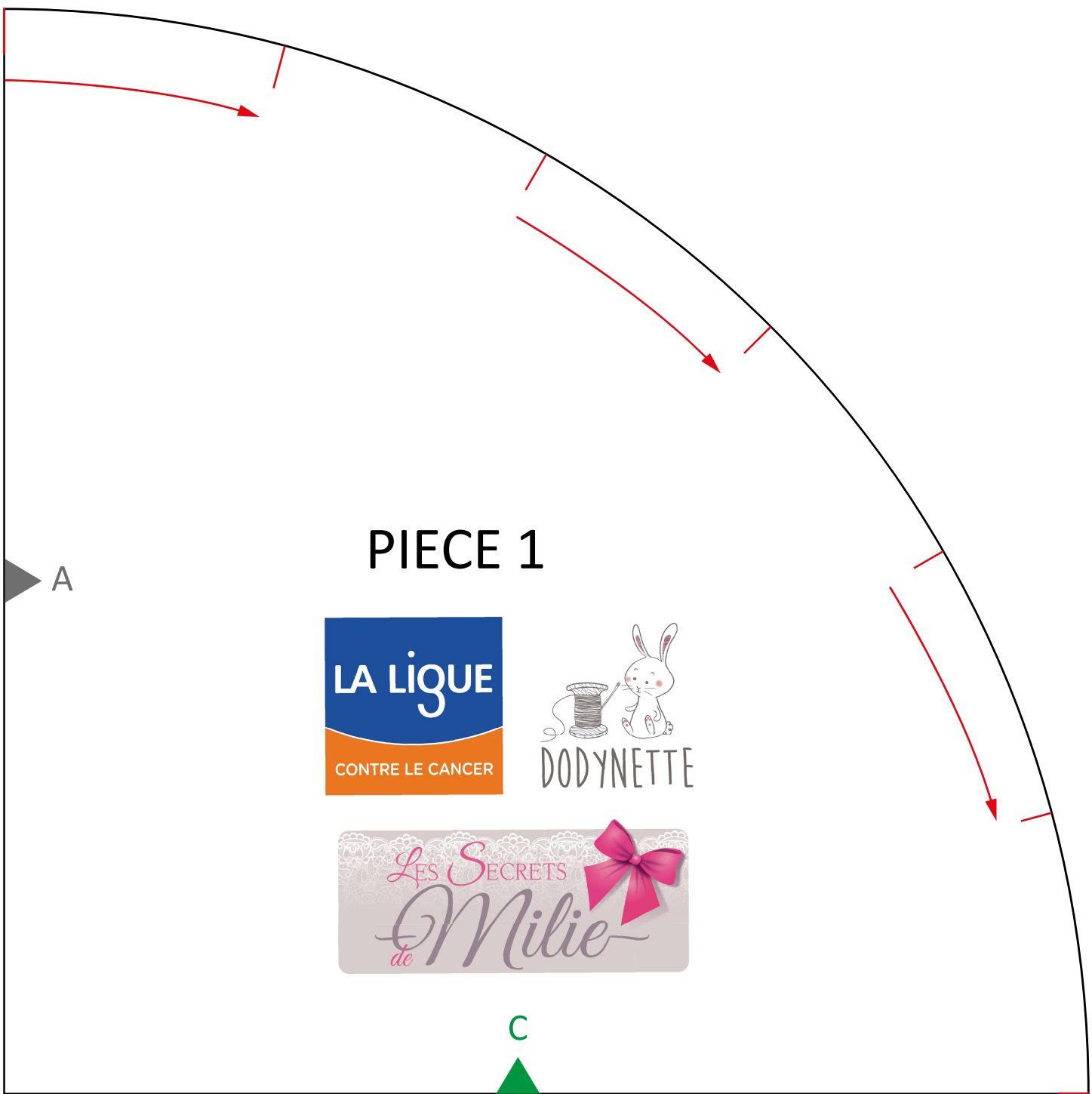
A 

B 

PIECE 1

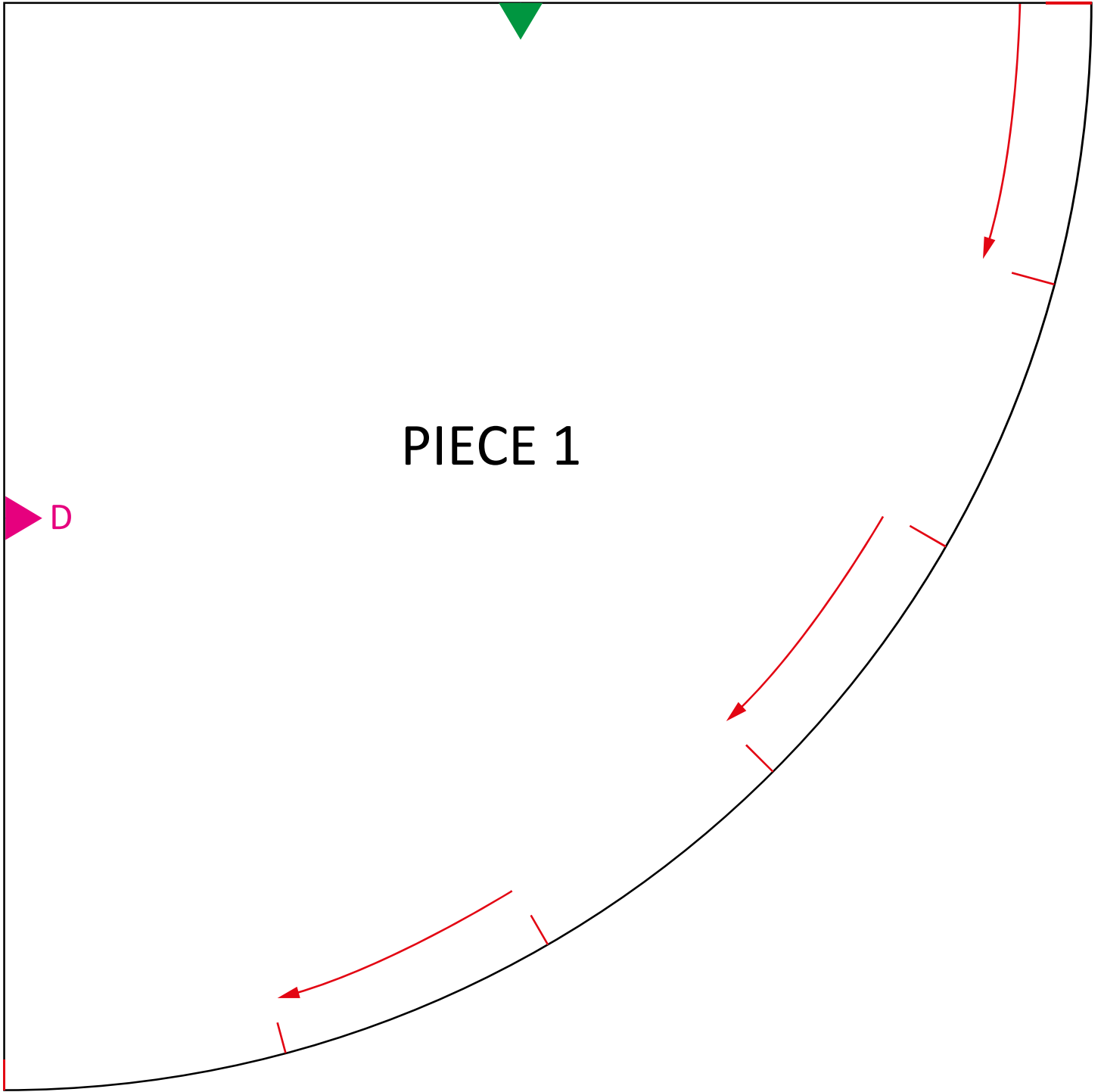


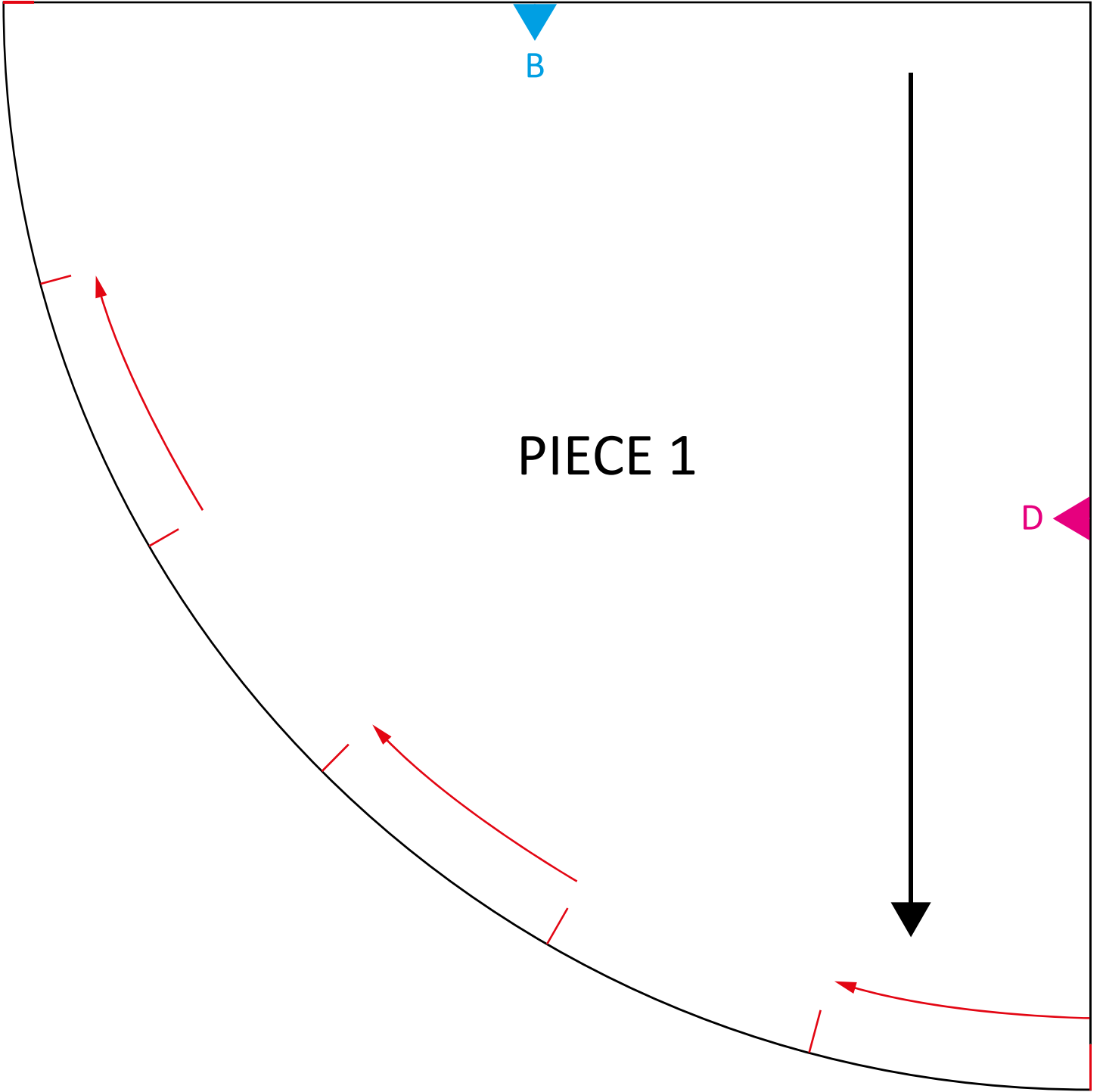
C

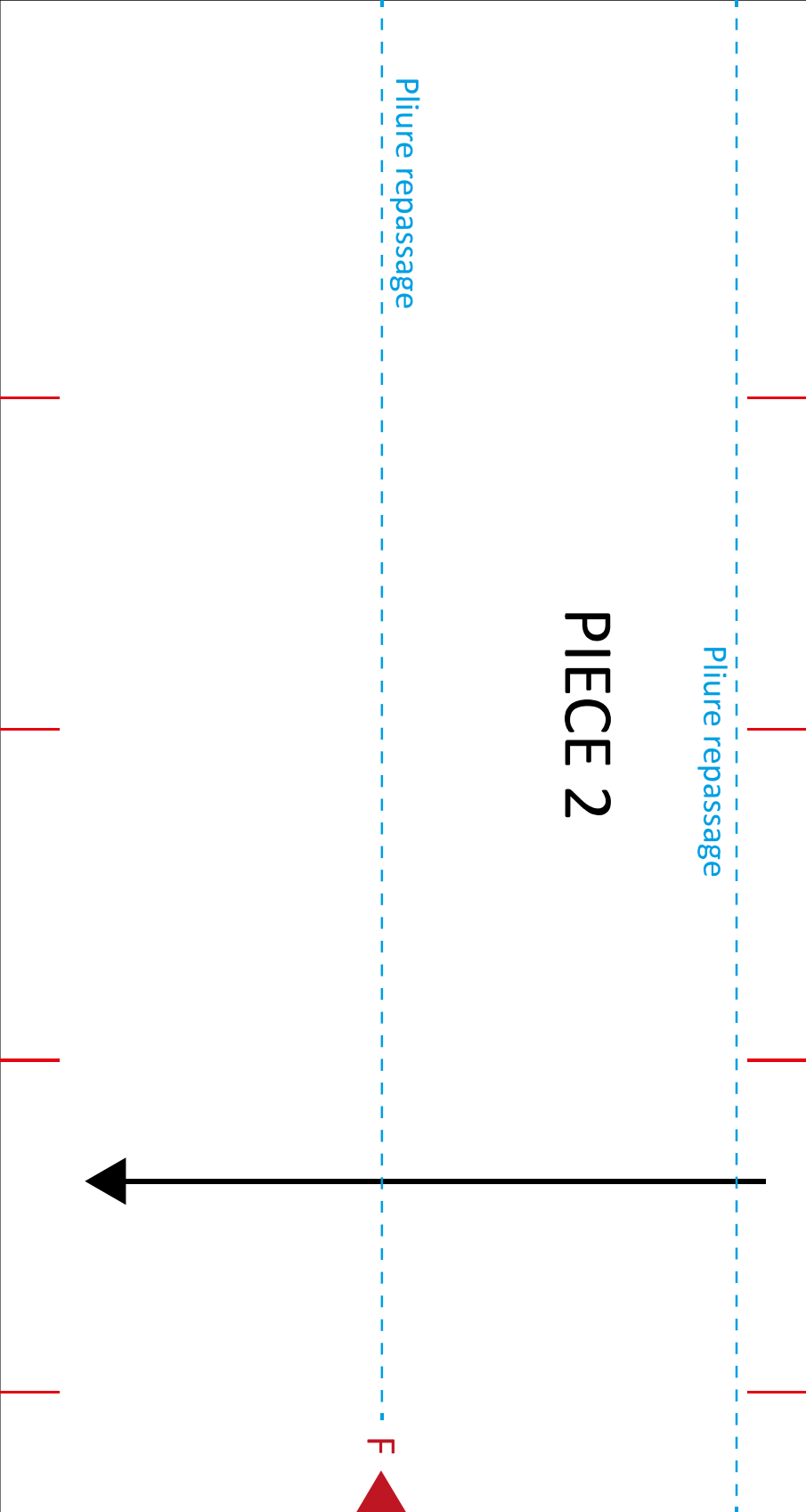


A









PIECE 2

Pliure repassage

Pliure repassage

F

Bonnet chimiothérapie

Piure repassage

F

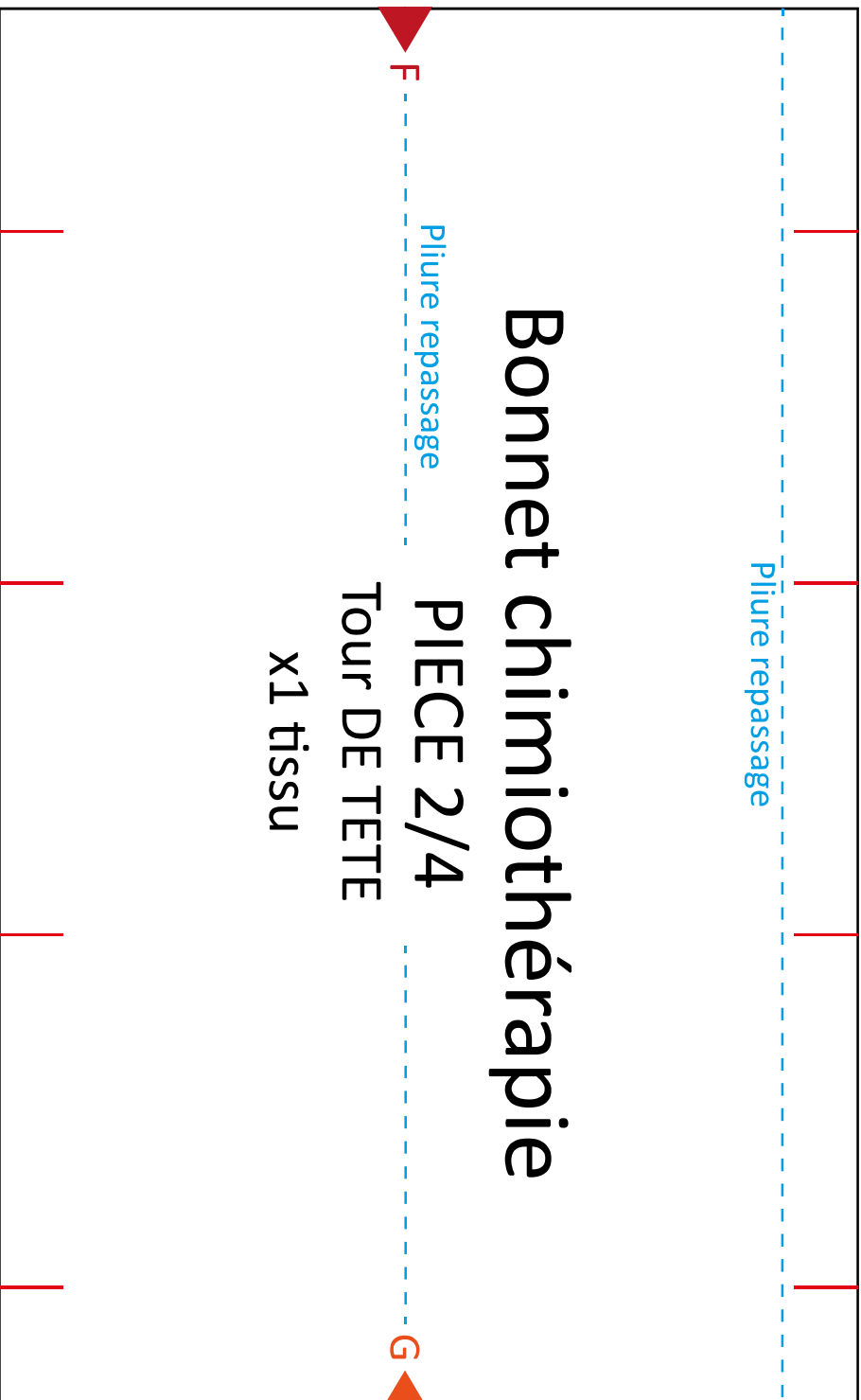
PIECE 2/4

Tour DE TETE

x1 tissu

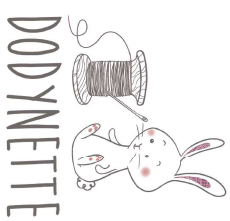
Piure repassage

G



Pliure repassage

PIECE 2



G

Bonnet chimiothérapie

PIECE 3

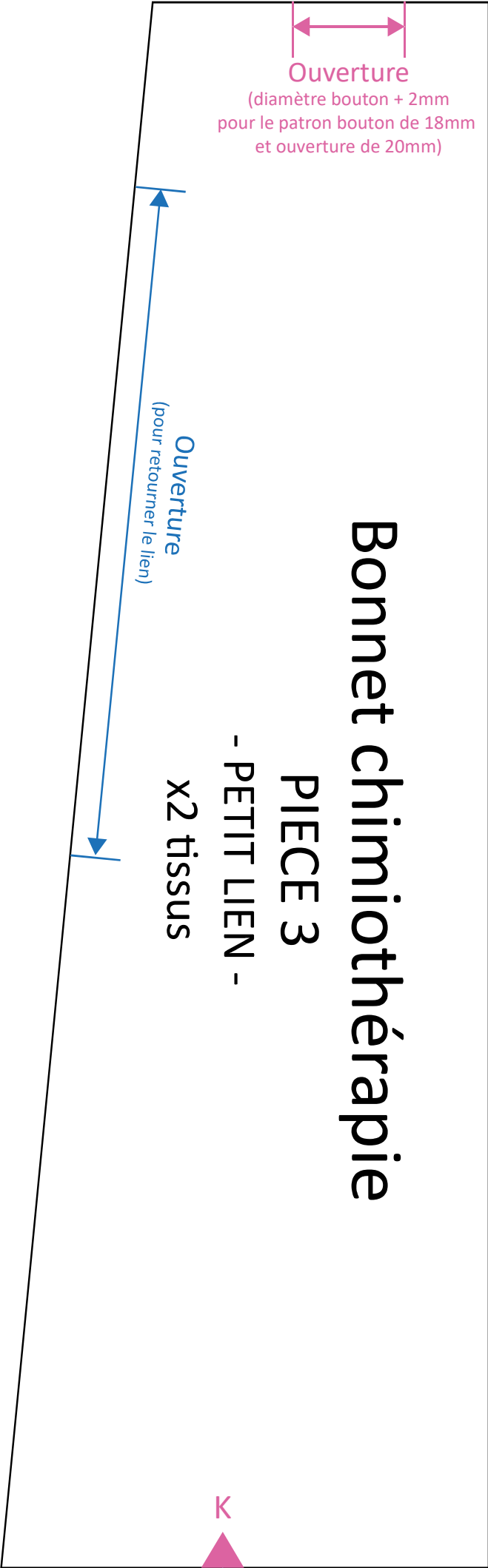
- PETIT LIEN -

X2 tissus

K

Ouverture
(diamètre bouton + 2mm
pour le patron bouton de 18mm
et ouverture de 20mm)

Ouverture
(pour retourner le lien)



Milieu au pli tissu DF

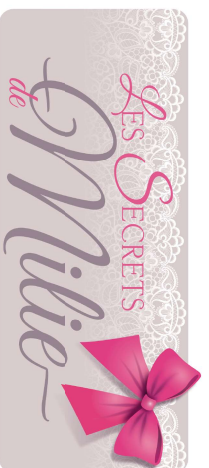
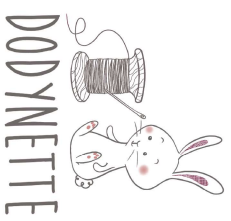
PIECE 3

K

L

Milieu au pli tissuDF

PIECE 3

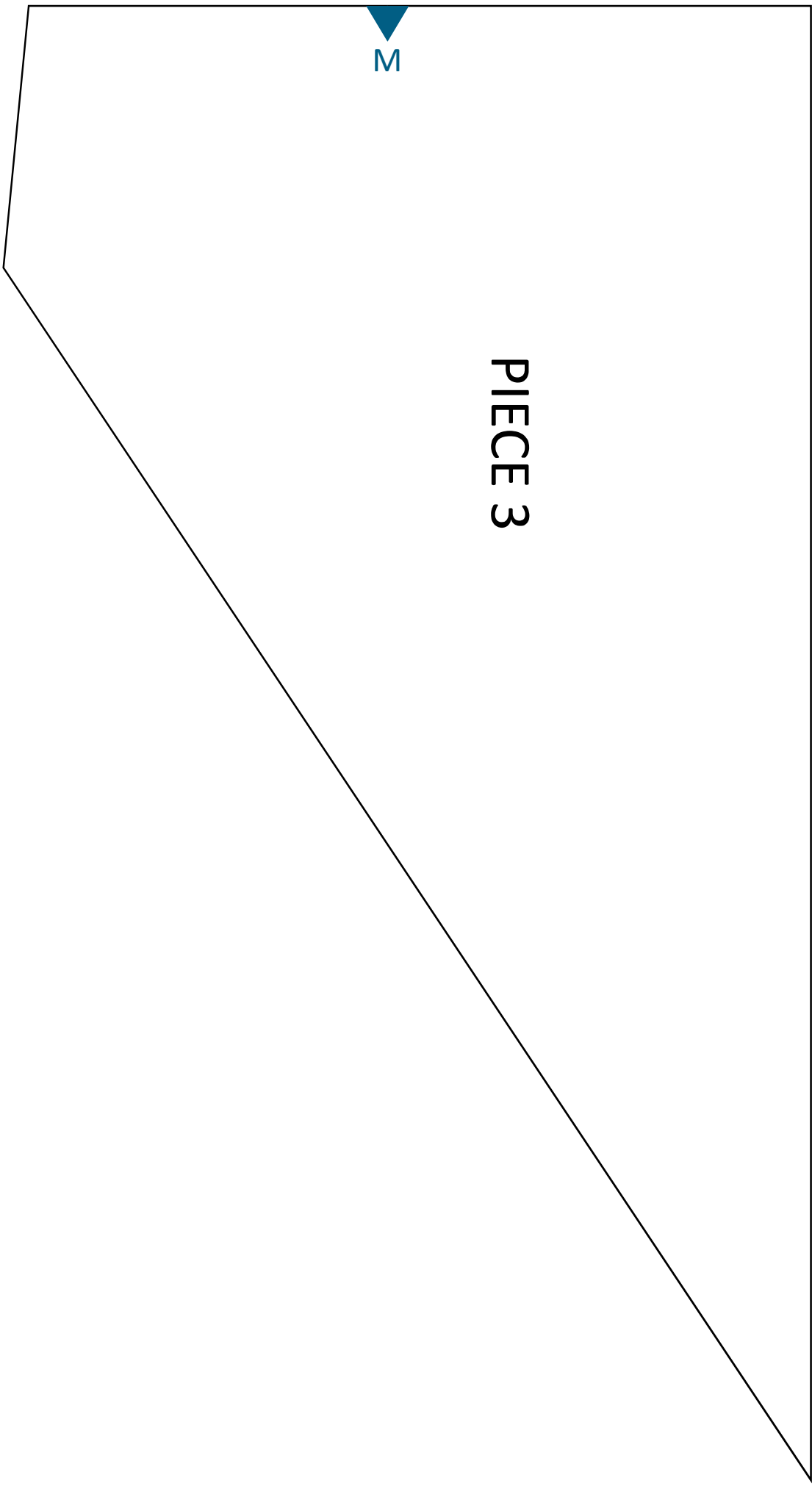


L

M

PIECE 3

M



Bonnet chimiothérapie

PIECE 4/4

- GRAND LIEN -

x1 au pli tissu

G

Milieu au pli tissu DF

G

PIECE 4

H

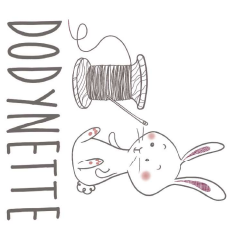
Milieu au pli tissu DF

PIECE 4

H



PIECE 4



PIECE 4

J

